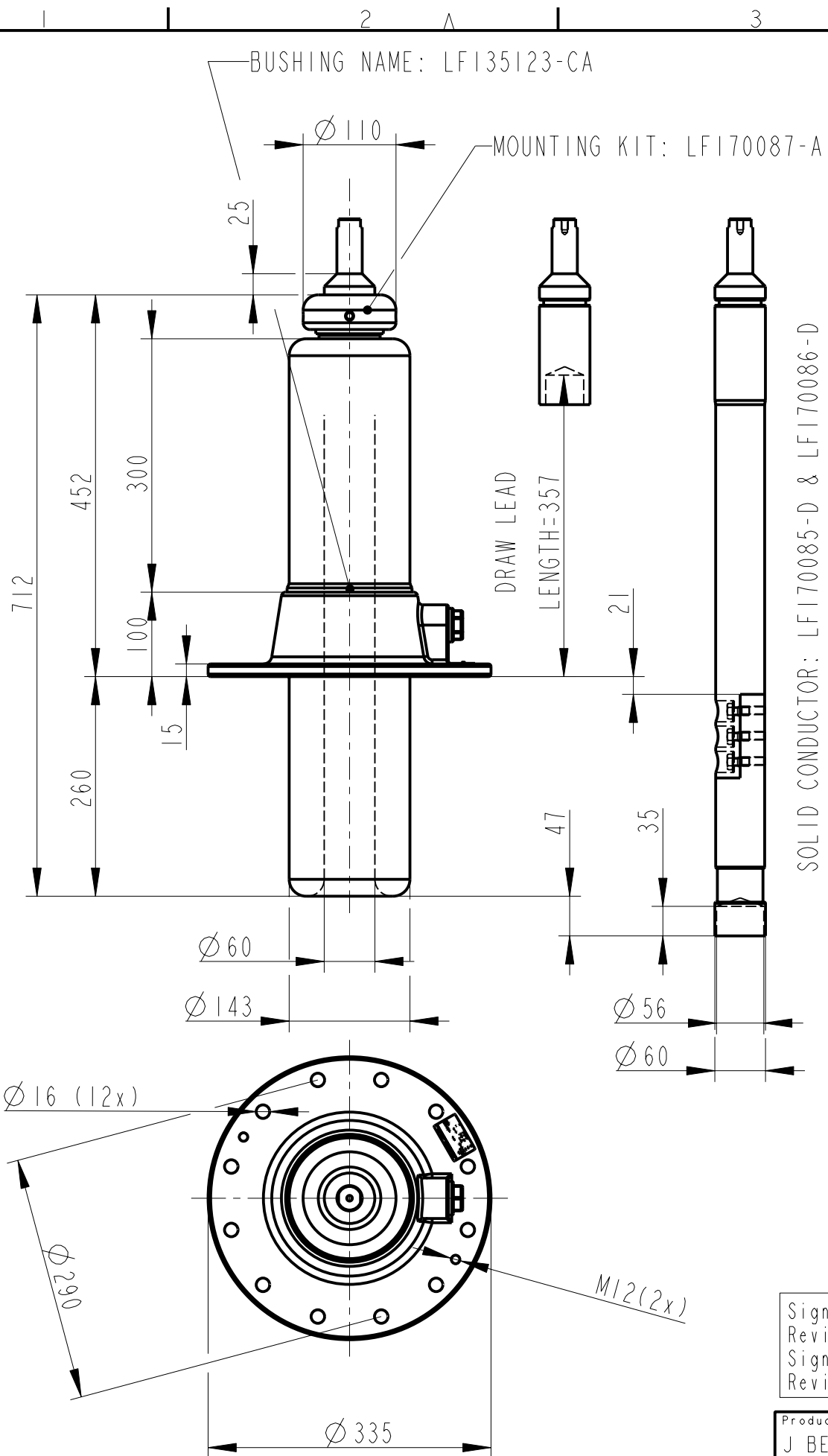


We reserve all rights in this document and in the information contained therein. Reproduction, use or disclosure to third parties without express authority is strictly forbidden. ©ABB



CATALOGUE No	TERMINAL
KATALOG Nr	D_CABLE
LF170084-A	5.0
LF170084-B	11.0
LF170084-C	13.0
LF170084-D	15.0
LF170084-E	18.0
LF170084-F	30.0
LF170084-G	42.0
LF170084-H	45.0
LF170084-I	50.0
LF170084-J	54.0

Rev	Ind	Revision	Appd	Date
1		Redrawn	FS	00 27

ELECTRICAL DATA, according to IEC 137		
Ratings	Rated voltage	170 kV
	Max phase to earth voltage, temporary	170 kV
	Max current with Cu-conductor	2000 A
	Max current with stranded cable 1200mm ²	1600 A
	Dry lightning impulse	550 kV
	Chopped lightning impulse	633 kV
Routine test	Dry power frequency	260 kV
Capacitance	Nominal capacitance	130 pF
GENERAL DATA, according to IEC 137		
Mass	Mass bushing	15 kg
Cantilever load	Cantilever test load, heavy load	3150 N
	Max cantilever operating load, bushing	1575 N
Temp class	Temperature class	CLASS 2
Mounting and service instructions		
		115 kV
	Rated max. line to ground voltage	88 kV
	Max current with Cu-conductor	2000 A
	Max current with stranded cable 1295 mm ²	1600 A

ABB Components Ludvika, Sweden

GSA123-00/2000/0 LF135123-CA

No. Ur/Uy 170/170 kV lr 2000 A 50/60 Hz

LI / SI / AC 550/-/260 kV

M 15 kg L 260 mm V 0-90

C1 pF Tan δ x

C2 pF Tan δ x

Signatures acc. to Revision 0 are valid
Signaturer enligt Revision 0 gäller

Production engineering review J BERNER	Approved H JOHANSSON
Inspection engineering review K-E ANDERSSON	Revision
Design engineering review F PETRICI	

Based on	Reg. No.	Title	Language 82
Prepared F STÄHLE	Responsible department COM/BK 9905	OIL-OIL BUSHING	
Approved H JOHANSSON	Take over department	GSA123-00/2000/0	Page 1(1)
	Database BUSHINGS	Document No. 2751365-CA	

ABB ABB Components