

Bushing Data:

Rated Voltage	52	kV
Phase to Ground Voltage	52	kV
Dry Lightning Impulse I, 2/50µs	250	kV
Wet power frequency AC	105	kV
Routine test Imin dry 50Hz	120	kV
Rated Current	800	A
Creepage Distance	1500±50	mm
Creepage Distance Protected	580	mm
Mass	27	kg

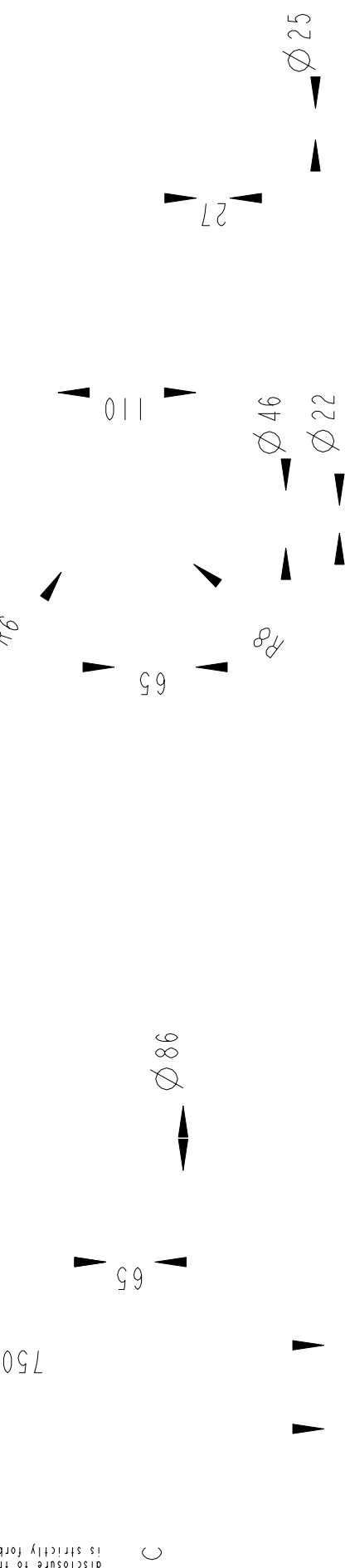
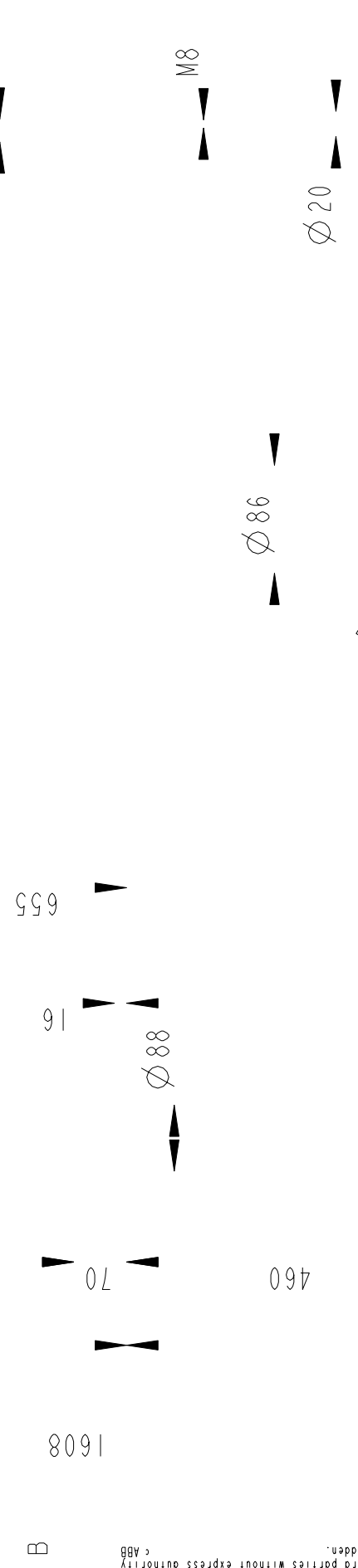
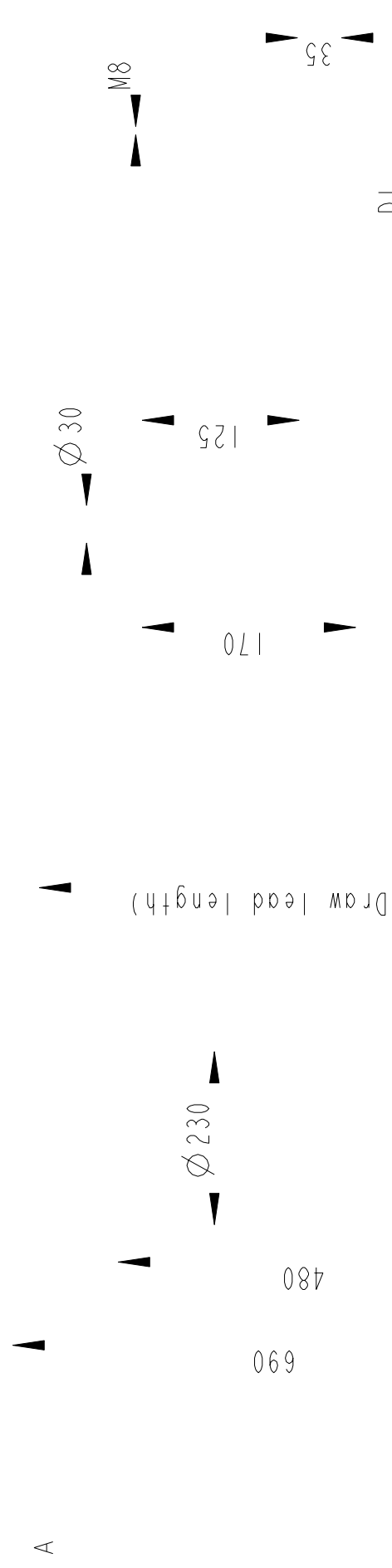
Ordering Data:

BUSHING	COLOUR AIR INSULATOR
LF123083-M	BROWN
-N	LIGHT GREY
OUTER TERMINAL	
LF 170 002-A	Cu, Ø30, L=125
LF 170 001-A	Al, Ø30, L=125
OTHER TYPES ON REQUEST	

INNER TERMINAL FOR STRANDED CABLE

For brazing	Conductor area	DI
LF 170 011-S	up to 150mm ²	Ø18
LF 170 011-U	Undrilled with pilot hole Ø5	
For crimping or brazing	Conductor area	DI
LF 170 010-M	50mm ²	Ø11
LF 170 010-N	70mm ²	Ø13
LF 170 010-L	95mm ²	Ø15

SOLID ROD CONNE



Based on	Reg. No.	Title
Prepared	Responsible department	GOB 250-800-0.5
Lövnord	COM/BK	
Approved	Take over department	
Johansson	Database	
Design engineering review		
Hedlund		
ABB	ABB Components	Document No. 2751369-114
		Language 82
		Page 1(1)

We reserve all rights in this document and in the information contained therein. Reproduction, use or disclosure to third parties without express authority from ABB is strictly forbidden.