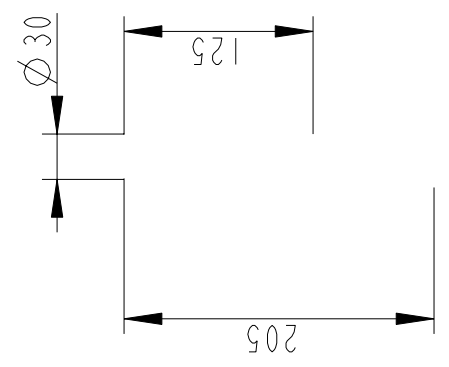
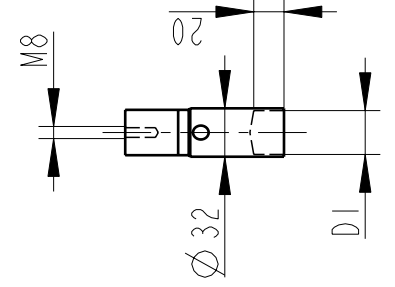


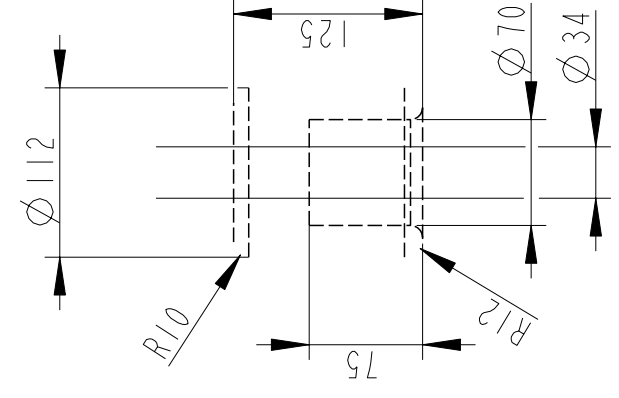
**OUTER TERMINAL**



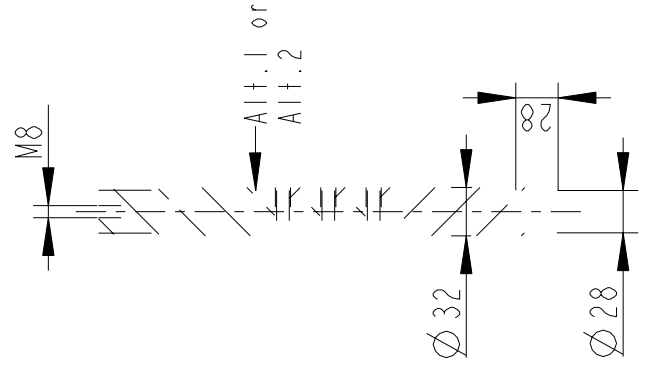
**INNER TERMINAL FOR STRANDED CABLE**



**END SHIELD**



**SOLID ROD CONNECTOR**



The solid rod can be divided either:  
 Alt.1: 20mm below the bushing flange or  
 Alt.2: 20mm below the upper end of the bottom porcelain

**Bushing Data:**

Rated Voltage	100	kV
Phase to Ground Voltage	72.5	kV
Dry Lightning Impulse 1,2/50µs	380	kV
Wet power frequency AC	150	kV
Routine test Imin dry 50Hz	162	kV
Rated Current	1250	A
Creepage Distance	2210±70	mm
Creepage Distance Protected	870	mm
Mass	37	kg

**Ordering Data:**

<b>BUSHING</b>	COLOUR AIR INSULATOR
LF123041-M	BROWN
-N	LIGHT GREY
<b>OUTER TERMINAL</b>	
LF 170 002-B	Cu, Ø 30, L=125
LF 170 001-B	Al, Ø 30, L=125
OTHER TYPES ON REQUEST	
<b>INNER TERMINAL FOR STRANDED CABLE</b>	
<b>For brazing</b>	Conductor area DI
LF 170 011-T	up to 285mm <sup>2</sup> Ø29
LF 170 011-V	Undrilled with pilot hole Ø5
<b>SOLID ROD CONNECTOR</b>	
LF 170 052 -V for Alt.1	
N/A for Alt.2	

**ABB Components:** **Part No.:** ...

No.	Urbly	U/SI/AC	kV tr	kg	L	mm
M						
C1			pf	Tan δ		
C2			pf	Tan δ		

Based on	Reg. No.
Prepared	Responsible department
LÖVnord	COM/BK
Approved	Take over department
Johansson	Database
Design engineering review	
Hedlund	

Title	
GOB 380-1250-0	
WITHOUT OIL LEVEL GAUGE	
LONG END SHIELD	
Page	1(1)
Document No.	2751369-134

**ABB** ABB Components

We reserve all rights in this document and in the information contained therein. Reproduction, use or disclosure to third parties without express authority is strictly forbidden.  
 ©ABB