

Bushing Data:

Rated Voltage	123 kV
Phase to Ground Voltage	90 kV
Dry Lightning Impulse 1,2/50µs	450 kV
Wet power frequency AC	185 kV
Routine test Imin dry 50Hz	195 kV
Rated Current	800 A
Creepage Distance	2720±80 mm
Creepage Distance Protected	1060 mm
Mass	45 kg

Ordering Data:

BUSHING	COLOUR AIR INSULATOR
LF123051-M	BROWN
-N	LIGHT GREY

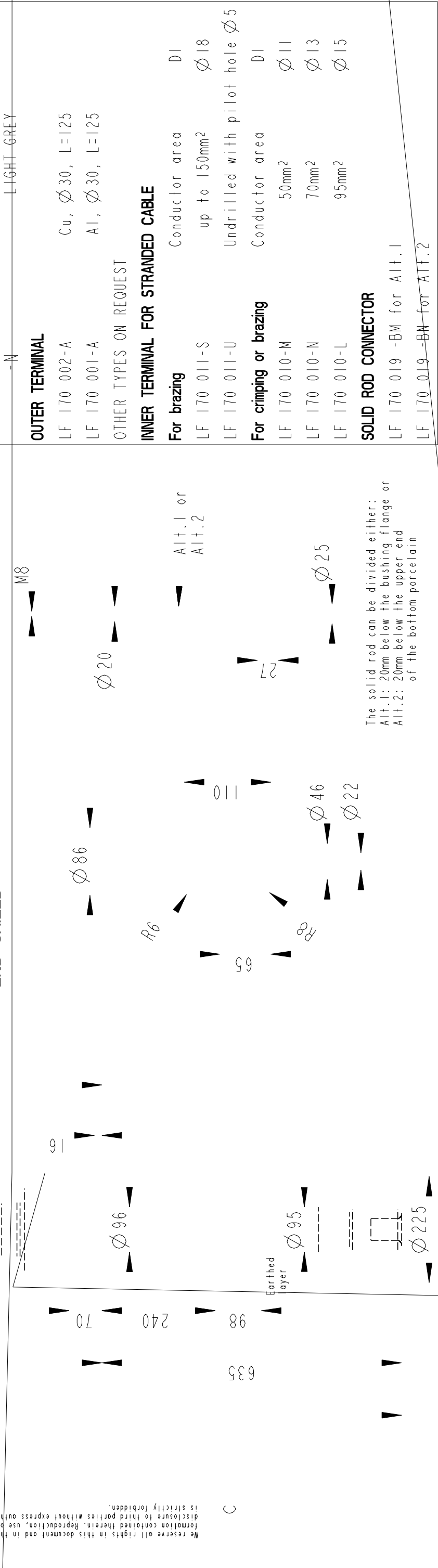
OUTER TERMINAL
 LF 170 002-A Cu, Ø 30, L=125
 LF 170 001-A Al, Ø 30, L=125
 OTHER TYPES ON REQUEST

INNER TERMINAL FOR STRANDED CABLE
For brazing
 LF 170 011-S Conductor area DI up to 150mm² Ø18
 LF 170 011-U Undrilled with pilot hole Ø5
For crimping or brazing
 LF 170 010-M Conductor area DI 50mm² Ø11
 LF 170 010-N 70mm² Ø13
 LF 170 010-L 95mm² Ø15

SOLID ROD CONNECTOR
 LF 170 019 -BM for Alt.1
 LF 170 019 -BN for Alt.2

SOLID ROD CONNECTOR

END SHIELD



The solid rod can be divided either:
 Alt.1: 20mm below the bushing flange or
 Alt.2: 20mm below the upper end of the bottom porcelain

Based on	Reg. No.
Prepared	Responsible department
Lövnord	COM/BK
Approved	Take over department
Johansson	Database
Design engineering review	
Hedlund	
ABB ABB Components	
Title GOB 450-800-0.3 WITHOUT OIL LEVEL GAUGE LONG END SHIELD	
Language 82	
Page 1(1)	
Document No. 2751369-142	

We reserve all rights in this document and in the information contained therein. Reproduction, use or disclosure to third parties without express authority is strictly forbidden.

6 mounting holes Ø16

test tap

3